

Canterbury Language Academy



Student Pre-Arrival Guide



Canterbury Language Academy
CRICOS: 02534J | ABN: 93 103 435 589

CLA-PreArrival_V1.2022-31012022

Contents

Welcome to CLA	Page 3
CLA Location	Page 4
CLA Campus	Page 5
What you need to organise before you leave your country	Page 6
COVID-19 and Travel to Australia	Pages 7-9
Pre-departure Checklist	Page 10
Clothing to bring with you	Page 11
Climate in Australia	Page 12
Cost of Living in Sydney	Page 13
Medical Insurance	Page 14
Accommodation in Sydney	Pages 15-16
Self care while studying	Page 17
Australia Airport Regulations	Pages 18-19
Transport in NSW	Page 20
Student Safety and Consumer Protection	Page 21
Student Visa Issues	Page 22
Dependants	Page 23
CLA Facilities	Page 24
Emergency Numbers	Page 25
Contacts at CLA	Page 26

WELCOME

Selamat Datang

Bienvenue

Svaagat

Bem Vinda

Bienvenidos

Yindī t̪xnɾəb

Huānyíng

Chào mừng

Dobrodošli

Welcome to CLA

Canterbury Language Academy (CLA) welcomes you to study in Sydney.

This Pre-Arrival Guide is designed to assist you in organising and preparing for your arrival to study in Sydney, Australia. CLA wishes you well in your travel to Sydney and your upcoming studies with us.

For further information about Canterbury Langugae Academy, please visit the CLA website: www.canterburyla.com.au



Level 4
29-37 Bellevue Street
SURRY HILLS NSW 2010
AUSTRALIA



+61 2 9280 3733 (Switch)
+61 2 9699 4588 (Direct)



reception@canterburyla.com.au

CLA Location



CLA Campus

CLA is located at Level 4, 29-37 Bellevue Street, SURRY HILLS. You can get to CLA by bus or train. If you travel to Central Train Station and walk towards Foveaux Street, it will take about 5-10 minutes to reach CLA.

CLA is located on the 3rd street to the left side of Foveaux Street as you walk out of the Elizabeth Street exit and past Woolworths Metro on the corner of Elizabeth and Foveaux Streets

Train fares and routes please see:

<https://transportnsw.info/travel-info/ways-to-get-around/train#/>

Bus fares and routes please see:

<https://transportnsw.info/travel-info/ways-to-get-around/bus#/>



What you need to organise before you leave your country

APPLY

Apply for and be granted a valid Australian Student Visa

BOOK

Book air travel and arrange to arrive in Sydney at least one week before class starts

COMPLETE

Complete all medical exams, eye and dental checks (dental is not covered under OSHC). Also arrange for your COVID-19 vaccinations well in advance of your travel date.

ARRANGE

Arrange your temporary accommodation before arrival in Sydney.

COVID-19 and Travel to Australia

- 1 Hold a valid Australian student visa
- 2 Be fully vaccinated against COVID-19 with a vaccine approved or recognised by the Australian Therapeutic Goods Administration (TGA).
- 3 Provide evidence of a **NEGATIVE** COVID-19 PCR or Nucleic Acid Amplification Test (NAAT) test taken **3 DAYS BEFORE** your flight departure
- 4 Digital Passenger Declaration / Australian Travel Declaration - bring your vaccination certificate and make legally binding declaration about your vaccination status.



COVID-19: After Arriving in Sydney (NSW)

1

Within **24 hours of arrival** in New South Wales (NSW) you must take a **Rapid Antigen Test (RAT)**, **and self-isolate** until you get a **negative result**.

2

You must take another Rapid Antigen Test (RAT) **on or after day 6** after your arrival in Australia.

3

Another Rapid Antigen Test (RAT) **on day 12 after** your arrival in Australia is **strongly recommend**.

4

At any time if you test **POSITIVE** for COVID-19 after a **RAT** test you **MUST** report your positive result on Service NSW App **AND** self-isolate at home for **7 days from the date you got tested**, even if you are fully vaccinated



COVID-19 and Travel to Australia

Important Websites

Australia Travel Declaration (ATD)

<https://covid19.homeaffairs.gov.au/australia-travel-declaration>

Approved COVID-19 Vaccines

<https://www.tga.gov.au/international-covid-19-vaccines-recognised-australia>

Information from the Department of Home Affairs (DOHA)

<https://covid19.homeaffairs.gov.au/vaccinated-travellers>

Arrival into New South Wales (NSW)

<https://www.study.sydney/return/pre-departure>

Frequently Asked Questions

<https://www.study.sydney/return/frequently-asked-questions>

Pre-departure Checklist

As you prepare to depart our country for your studies at CLA, you may use this checklist to ensure you are prepared to travel. Please ensure you bring the following documents to Australia:

Current and valid passport

Current student visa or another valid Australian visa

Exit visa/permit (from your country if necessary)

Medical records, vaccination records, doctor's prescription of any medication you are taking, reading glasses etc.

Passport size photographs

Confirmation of Enrolment (CoE) that you have received from CLA

Receipt/s of payment made to CLA

IDs - driver's license, birth certificate etc.

Credit card, traveler's cheques, AUD (Australian Dollars) approx. \$1000 cash for initial expenses

Transcripts, certificates and course syllabuses of any study taken by you

Work experience certificates and resume

Marriage certificate if you are bringing your spouse with you or intend to bring spouse to Australia

If you have children, their birth certificates, academic certificates

Clothing to bring with you

In summer, most people wear light cotton clothes whereas in winter people wear slacks, a sweater/coat and closed shoes. It is advisable that you bring suitable clothes with you for both summer and winter.



Closed shoes / joggers for winter and a pair of sandals for summer



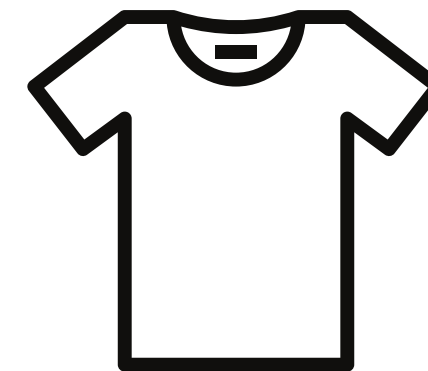
Bed linen (sheets/pillow) and a light blanket/quilt



Umbrella and rain coat



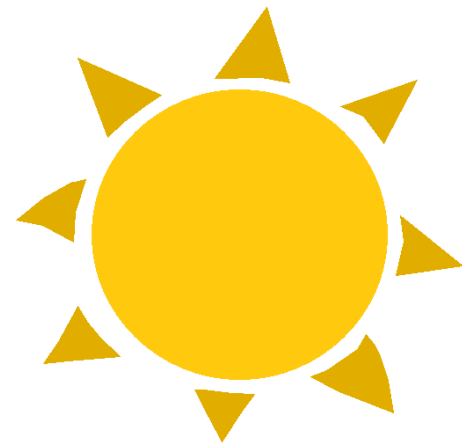
Winter clothes including jumper, coat, long sleeved shirt, trousers / slacks etc.



Summer clothes including t-shirt, shorts, dress, swimming suit etc.

Climate in Australia

Four Seasons in Sydney



**Summer -
December to February**



**Autumn -
March to May**



**Winter -
June to August**



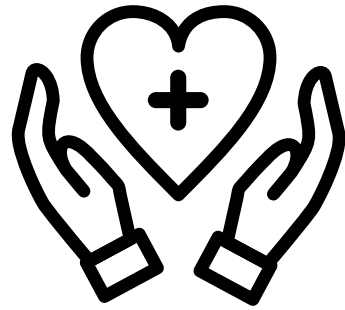
**Spring -
September to November**

Rain is expected anytime through the year in Sydney. Sometimes it is light rain and at other times there could be thunderstorms. In summer, day temperatures can exceed 35 degrees celsius and in winter the average day temperature (June/July) is around 16 degrees celsius. For further information regarding the climate in Sydney please refer to: **www.sydney.com.au/weather.htm**

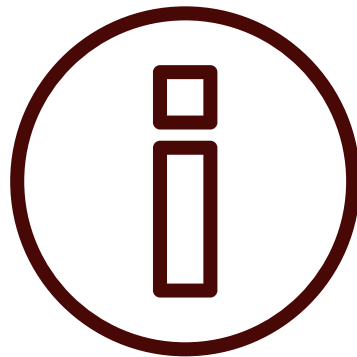
Cost of Living in Sydney

Expenses	Per person	Amount required in Australian Dollars (AUD)
Travel	Applicant	Return air fare to Australia
	Family members	One return air fare to Australia per person
Tuition	Applicant	Course fees
	School aged children 5-18 years	\$8,000 AUD per year
Cost of living	Applicant	\$21,041 AUD per year
	Partner/Spouse	\$7,362 AUD per year
	Child	\$3,152 AUD per year

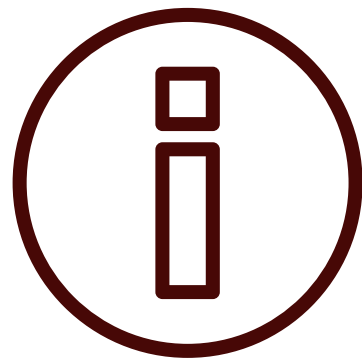
Medical Insurance



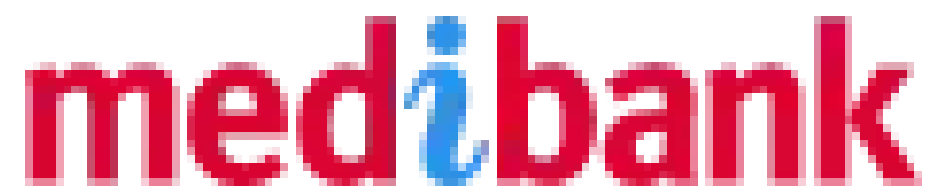
Overseas Student Health Cover (OSHC) is a mandatory condition of your Australian student visa. - you must have the right sort of insurance cover (single, couple or family) and it must be for the duration of your visa.



If you are taking out your own insurance cover, or your agent is doing this for you - you must provide a copy of your policy to CLA.



If you are arriving with a spouse and/or dependent children, you will need to pay a family premium. For more information on insurance providers visit:
https://privatehealth.gov.au/health_insurance/overseas/overseas_student_health_cover.htm



CLA orders Overseas Student Health Cover (OSHC) through Medibank Essentials. Please see the CLA team for further information.

Accommodation in Sydney

Renting / Sharing accommodation

- For long term rental options and share accommodation, please visit the Domain website: **www.domain.com.au**
- Know your rights and obligations when living in rental or share accommodation - visit the NSW Department of Fair Trade website - **<https://www.fairtrading.nsw.gov.au/housing-and-property/renting>**



Accommodation in Sydney

Temporary Accommodation

- CLA does not have on-campus accommodation facilities for international students.
- The following website is a list of private hotels/ hostels that you may wish to contact to organise temporary accommodation when you arrive in Sydney - **www.sydney.com.au/hotels.htm**

Self-Care while studying

- Students who live in shared accommodation are expected to share household tasks like cleaning and cooking.
- If you do not know how to cook, it is adviseable to bring along simple recepies and learn to cook prior to arriving in Sydney as eating out in restaurants can be expensive depending where you go.
- The following list are some Australian websites you can also refer to:

Taste - www.taste.com.au

Australia's Best Recipes - www.bestrecipes.com.au/

My Food Book - www.myfoodbook.com.au/



Australian Airport Regulations

Australian Customs

- On arrival at an airport in Australia, you will be asked to show your passport and the completed incoming passenger card to the customs officer. You will then collect your luggage and go to the "green" or "red" channel.
- Green Channel = if you **do not have** any goods to declare
- Red Channel = if you **have goods** to declare or if **you are unsure**
- When travelling to Australia, if you are carrying a total of AUD \$10,000 or more in Australian **or in other currency, you must declare the money** on your incoming passenger card and when you are questioned by Australian Customs officials on arrival. If you do not declare this money, customs may take the money and you can be prosecuted/charged. It is not an offence to bring this money to Australia but you must declare the money.
- For information regarding duty free allowance and restricted imports please refer to:
<https://info.australia.gov.au/information-and-services/passports-and-travel/customs-and-quarantine>

Australian Airport Regulations

Australian Quarantine

- The Australian Quarantine Service strictly enforces Australian regulations covering items that cannot be brought into Australia.
- You must declare on the incoming passenger card any of the items such as: Food, Plant Material - including any wooden items and Animal products
- Any prohibited items should be placed in the quarantine bins on the way to the baggage collection area at the airport.
- Baggage is checked by both specifically trained sniffer dogs and x-ray machines - so please declare items even if you are unsure. On the spot fines of minimum \$240AUD or more can be imposed for not declaring items. Further information can be found at:

<https://www.abf.gov.au/entering-and-leaving-australia/can-you-bring-it-in/overview>

Transport in NSW



- From the airport you may choose to proceed by train, taxi or airport shuttle bus
- Taxi charges approx. \$35 AUD - \$50 AUD from the airport to the city centre
- Train charges approx. \$16 from the airport to Central Station in the city centre
- Shuttle bus charges approx. \$15-\$20 from the airport to the city
- Please note: Shuttle bus needs to be pre-booked



Sydney Airport - www.sydneyairport.com.au

Sydney public transport - <https://transportnsw.info/>

Moving your overseas driver's licence to NSW -
<https://www.nsw.gov.au/topics/driver-and-rider-licences/visiting-or-moving-to-nsw/moving-overseas-licence>

Student Safety and Consumer Protection

Study in Australia

Please refer to the following information on safety:

<http://www.studyinaustralia.gov.au/global/live-in-australia/health-and-safety/personal>

NSW Department of Fair Trade - International Student Consumer Guide

This information will provide details on student's rights and responsibilities in NSW. To access this visit the Department of Fair Trading NSW website link:

<https://www.fairtrading.nsw.gov.au/help-centre/youth-and-seniors/youth/international-students>

Student Visa Issues

The Australian Government operates in an overseas student program that allows people who are not Australian citizens or permanent residences to study in Australia. If you wish to study in Australia you must first get a student visa.

For all information and advice on applying for your visa, ask one of CLAs representatives or make contact with yur nearest Australian Emassy, Consulate or High Commssion. For latestest general information visit the following sites:

Department of Home Affairs

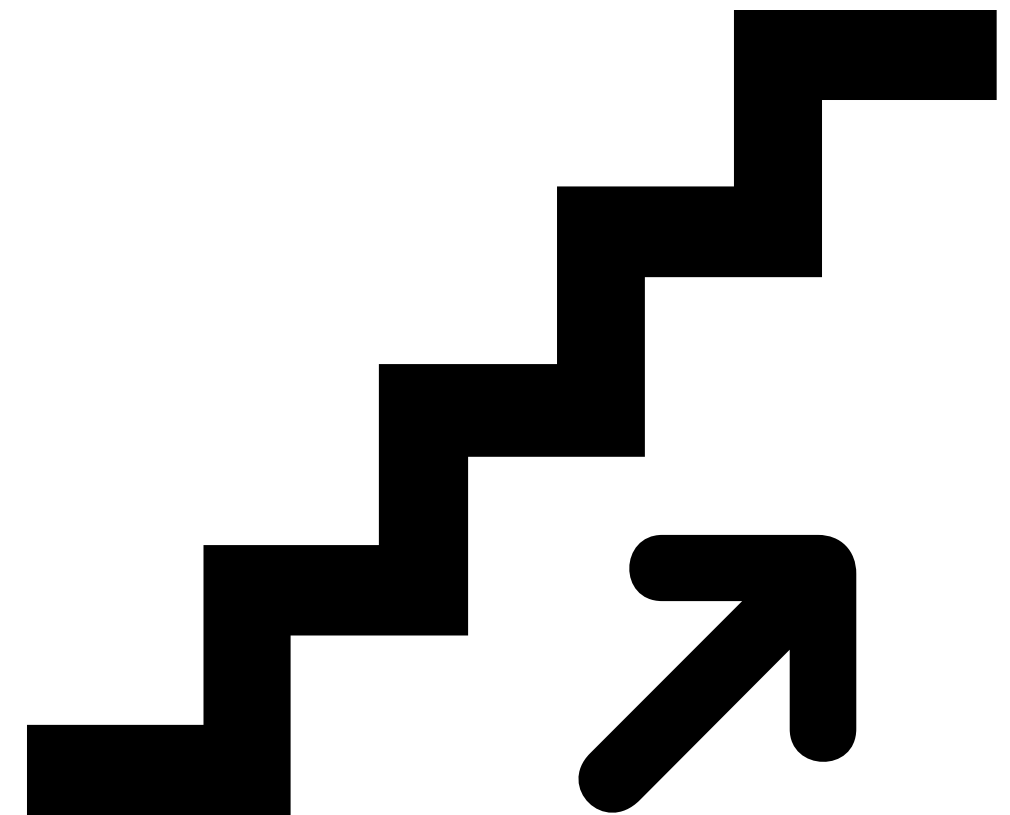
www.homeaffairs.gov.au

Australian Student Visa information

<https://immi.homeaffairs.gov.au/visas/getting-a-visa/visa-listing/student-500>

Conditions of Student Visa

<https://immi.homeaffairs.gov.au/visas/already-have-a-visa/check-visa-details-and-conditions/overview>



Dependants

- If you have dependents travelling with you to Australia, you need to ensure they are covered in your student visa application. School-aged dependents accompanying you to Australia will be required to pay full fees if they are enrolled in either a government or non-government schools.
- For further information please visit the following websites:
- NSW Schools - www.schools.nsw.edu.au
- Board of Studies NSW - www.boardofstudies.nsw.edu.au



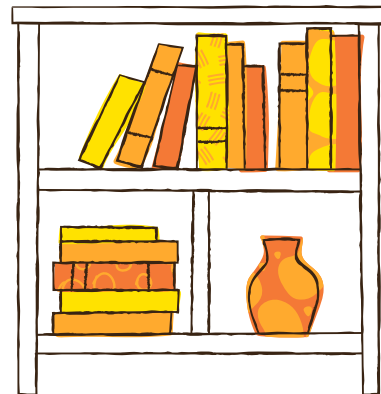
CLA Facilities



Computer lab with laptops that can be accessed for class and self-study Mon-Thu, 9am-5pm



Student room on level 5 with microwaves, fridge, vending machines, and recreation activities. There is also a smaller break room on level 4 with capacity limits.



Reference books students can borrow - please see CLA Reception staff



Free Wi-Fi internet which can be accessed throughout the building using your device or laptop

Emergency Numbers

The following numbers in New South Wales you should keep with you at all times in the case of an emergency.

Ambulance, Fire, Police: 000

Emergency Dental Info (after hours): 9369 1111

Emergency Prescription Service: 9235 0333

Poisons Information Hotline: 13 11 26

Royal North Shore Hospital: 9926 7111

St Vincents Hospital: 9339 1111

After Hours National Home Doctor Service: 13SICK (that's 13 7425)



Contacts at CLA

CLA phone numbers:

Direct - +61 2 9699 4588

Switch - +61 2 9280 3733

Director of Studies - Afonso Caxala

Email: dos@canterburyla.com.au

Campus Director - Gajinder Paul

Email: gpaul@usqsydney.nsw.edu.au

Campus Director - Nick Kumar

Email: nick@usqsydney.nsw.edu.au

Marketing & Student Services - Gabrielle Kalanja

Email: gabrielle@usqsydney.nsw.edu.au

